

# Office 490 m<sup>2</sup>

Technopolis Gasperich, Luxembourg



**TECHNOPOLIS**

# OFFICE 490 M<sup>2</sup> | TECHNOLIS GASPERICH

<p>Available for rent a spacious 1st floor office at Technopolis Gasperich in Luxembourg. The space consist on several rooms and it includes toilet facilities. Technopolis Gasperich is the ideal spot for companies of all sizes that are looking for flexible office space in Luxembourg City. Luxembourg City centre is reachable in around 10 minutes by car.</p>



## Area

490 m<sup>2</sup>



## Floor

1st floor



## Parking

There is a parking hall in the building.



## Type

Office



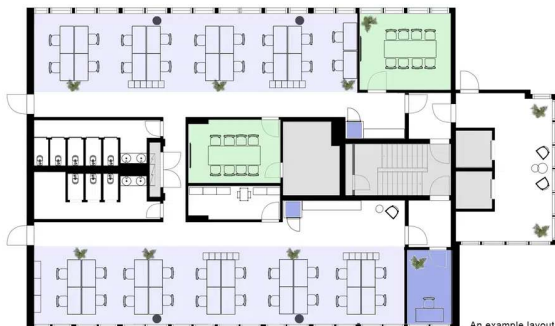
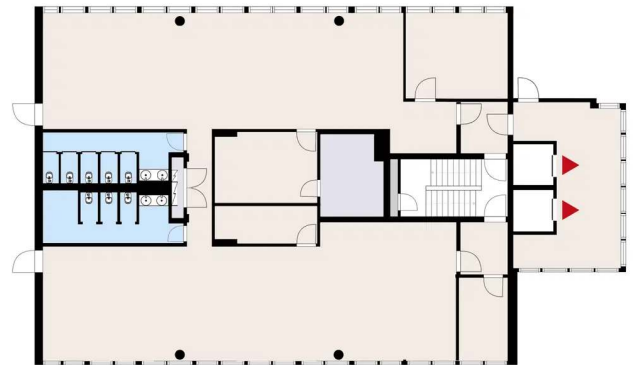
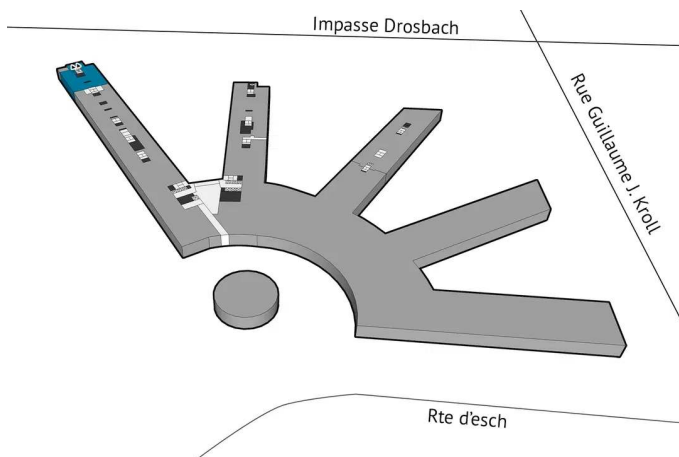
## Availability

Available



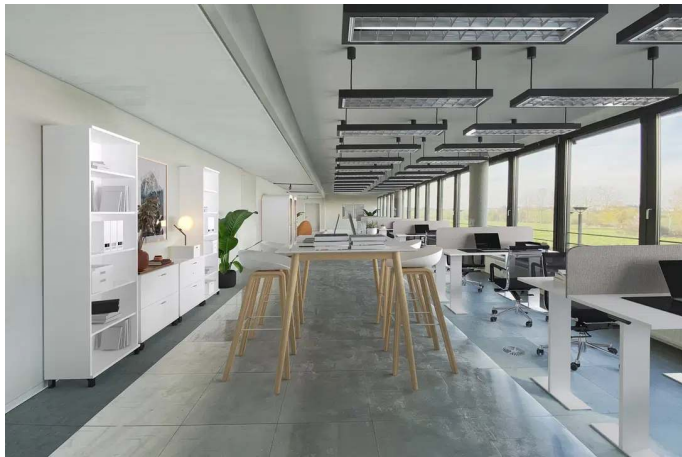
## Address

12E Impasse Drosbach 1882 Luxembourg



An example layout

OPEN WORK AREA FOCUS AREA & PHONE BOOTHS MEET & CO-WORK AREA KITCHEN & LOUNGE AREA



# Technopolis Gasperich – Flexible office space in Cloche d’Or, Luxembourg city

Technopolis Gasperich is the ideal spot for companies of all sizes that are looking for flexible office space in Luxembourg City. You’ll find the campus in the developing business district of Cloche d’Or, which acts as a headquarters for several major businesses and European Union institutions. On Gasperich campus you get an office space that is centrally located only 5 kilometres from city center with an attractive pricing.

It’s simple to travel to and from Gasperich campus, seeing as it’s a very short distance from Luxembourg City center and close to a major highway interchange. You can easily hop on a bus from to other parts of the city and country, while a large-scale tram project will soon connect Cloche d’Or with the airport. If you want to go shopping, the biggest shopping mall in the country, LCO, is only five minutes away from the campus.

Technopolis Gasperich offers a wide range of services, such as reception, concierge service, a stylish restaurant and coffee shop as well as meeting rooms. Our services for your company also include great parking spaces, which are highly appreciated by our customers.



Meeting rooms & catering



Bicycle parking



Parking



Reception & security



Restaurants & coffee shops



Restaurants & coffee shops



Restaurants & coffee shops



Cleaning & maintenance



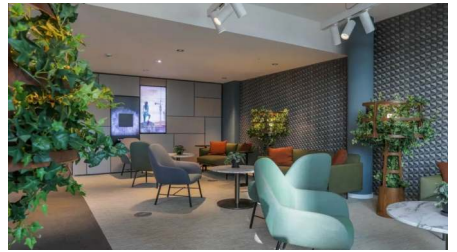
Community



Gym & fitness



Workplace solutions



# Sustainability highlights of the campus



100%

Carbon-neutral electricity



2 kg

CO2 / gross m<sup>2</sup>  
Carbon footprint

Scope 1 and 2 (energy), energy procured by Technopolis

\* Technopolis buildings' average carbon footprint in 2016



100%

BREEAM Very good certified campus



A

Energy class buildings

## DIRECTIONS

Technopolis Gasperich campus is located in the district of Cloche d'Or with fantastic transport connections to the city center, the airport, and quick access to the highway. The driving time to the international airport at Findel is around 15 minutes.





# At Technopolis your office space change is smooth and effortless

We have thought about every detail to make the process easy for you:

- ✓ Our sales team matches your needs and wishes with the right office space. We make sure that the total package includes the flexibility and all the services you require.
- ✓ Our in-house design team helps you to plan your new workspace, from the functionality of the layout to choosing the right materials.
- ✓ Our trusted moving partners ensure your move is hassle-free by taking care of every detail from door to door.
- ✓ Our comprehensive furniture selection offers high-quality products, with the option to buy, rent, or even choose recycled furniture.
- ✓ We provide tendered partners for all your needs, from space repairs to cleaning, so you don't have to worry about everyday practical matters.

## GET IN TOUCH WITH US

We will help you find the right solution for your company.



Valentin Tosolini

Real Estate Manager

✉ valentin.tosolini@technopolis.lu

☎ +352 621 748 639