

# Office 73 m<sup>2</sup>

Technopolis Otaniemi, Espoo



**TECHNOPOLIS**

# TECHNOPOLIS OTANIEMI – SMART OFFICE SPACE CLOSE TO AALTO UNIVERSITY

Technopolis Otaniemi is the ideal spot for your company to collaborate with university students, graduates, and members of different fields. This contemporary, smart office space is located near Aalto University and can be accessed by the Ring I road, metro and light rail line 15.

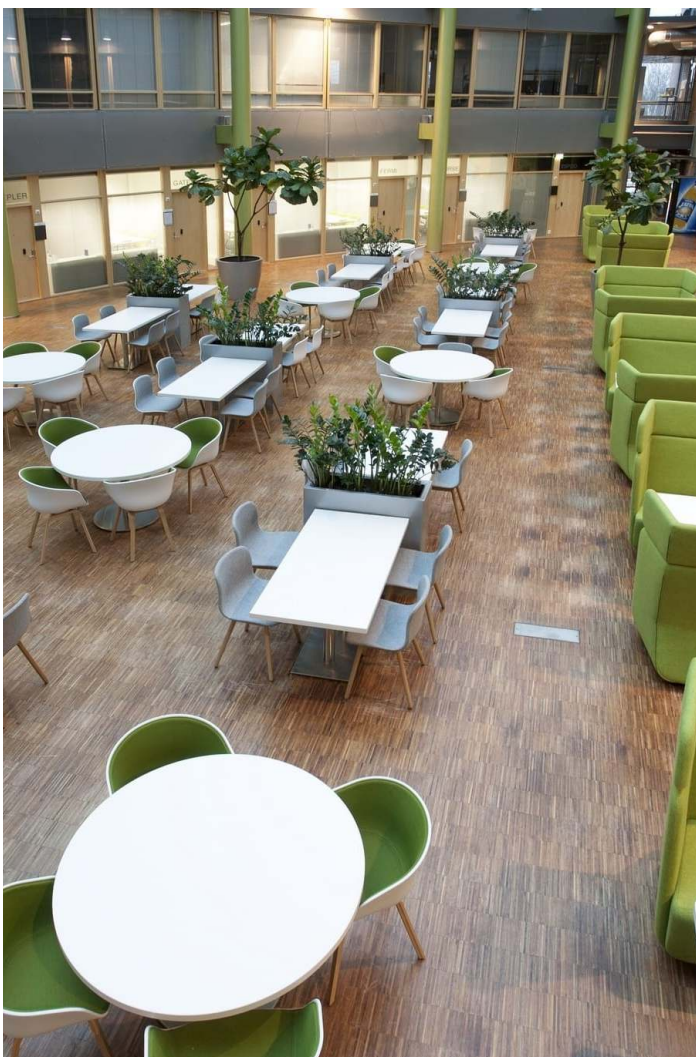
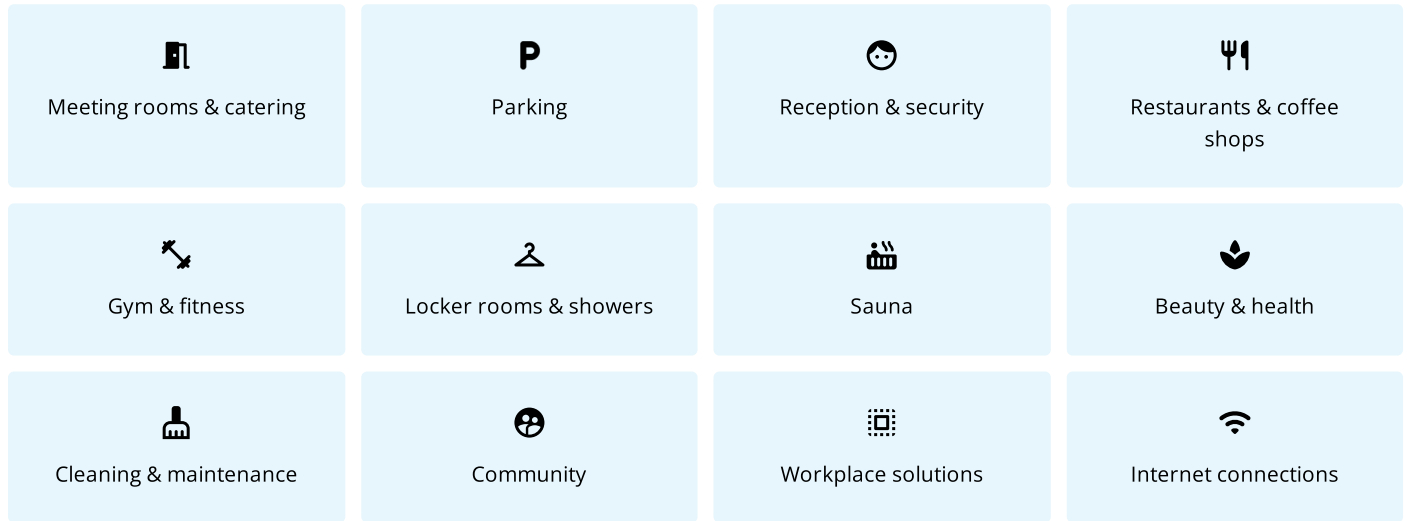
Whether you're part of an SME or large company, you can find flexible office space in the four Innopoli buildings on campus. The on-site facilities include restaurants, a gym, and plenty of parking space that accommodates drivers of electric vehicles. You're also free to use the wide range of meeting rooms and sauna facilities! From our campus you will also find a small office area, Technopolis HUB, which consists of several smaller offices for teams of up to 10 people.

Otaniemi campus is fully carbon-neutral in all energy consumption procured and all campus buildings hold international LEED certificates for energy and environmental conduct. Read more about Technopolis' sustainability.



## SERVICES ON CAMPUS

Your functional work environment combines office space and access to our services. Discover all the services available on this campus.



Restaurants & coffee shops

# Delicious meals served all day long

At Otaniemi campus, you can take your pick from our four fantastic restaurants: Hehku, Tastory, Helinä, and MIN Otaniemi. So no matter if you come for breakfast on the go, lunch with colleagues, a work meeting, or a sweet treat, we're always ready to share our love of food.



## DIRECTIONS

Technopolis Otaniemi campus is located in Espoo near Aalto University along the Kehä I ring road and the metro.



# OFFICE 73 M<sup>2</sup> | TECHNOPSIS OTANIEMI

An office space consisting of three adjacent spaces is available for rent. Shared kitchen and toilet facilities are right next to the premises. Technopolis offers its tenants a comprehensive set of services and the campus has, among other things, three gyms and five conference rooms with saunas. The campus is located within easy reach of the Länsimetro and Ring Road I.

**Area**

73 m<sup>2</sup>

**Floor**

2. floor

**Parking**

Parking spaces can be found in the parking garage and in the outdoor parking area.

**Type**

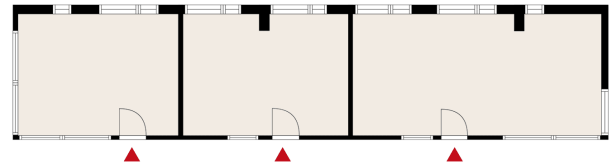
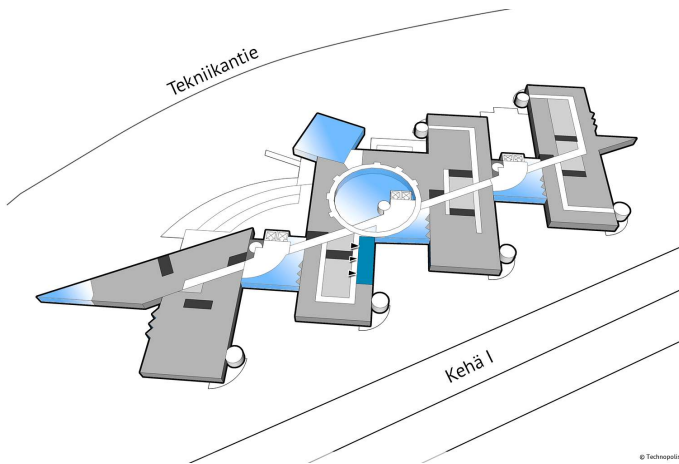
Office

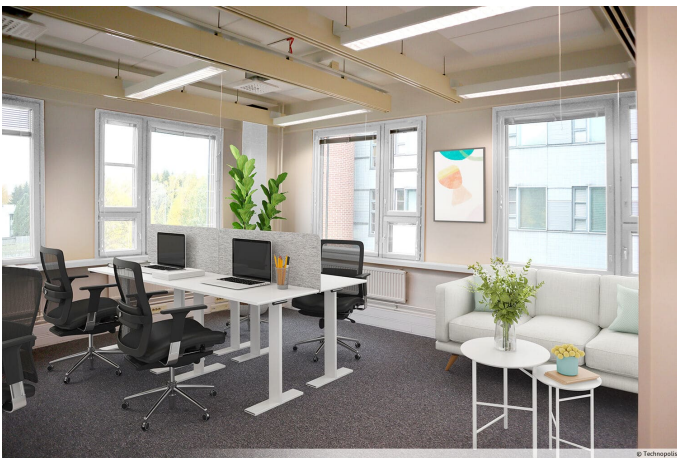
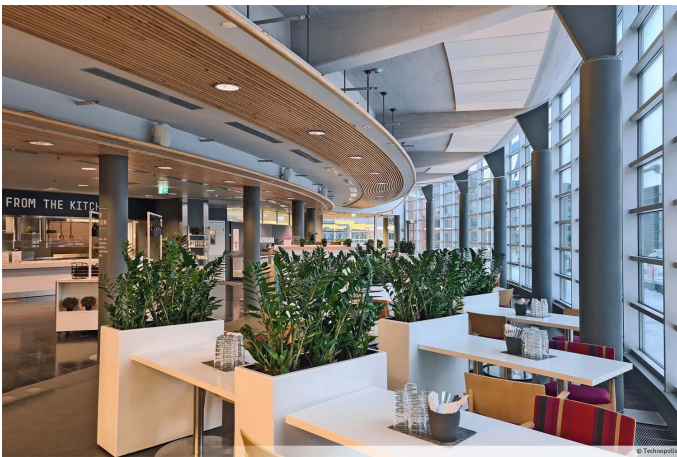
**Availability**

Available

**Address**

Tekniikantie 12 02150 Espoo





# Why Technopolis?

Squares are not really what you want, are they? Wouldn't you prefer...

- ✔ Flexible office space that adapts to your needs
- ✔ Your own contact person and helpful staff at reception
- ✔ Being part of a vibrant community of companies and professionals
- ✔ One contract that includes access to space and all services
- ✔ A strategic location and great transport connections

## GET IN TOUCH WITH US

We will help you find the right solution for your company.



Hanna Peltola

Account Manager

✉ [hanna.peltola@technopolis.fi](mailto:hanna.peltola@technopolis.fi)

☎ +358 50 514 3746



Heta Lindman

Account Manager

✉ [heta.lindman@technopolis.fi](mailto:heta.lindman@technopolis.fi)

☎ +358 50 336 5815